



Cat® CM210-NP

Continuous Miner

Specifications

Operating Dimensions

Mining range (recommended)	914 - 1245 mm (36 - 49 in)
Minimum height	762 mm (30 in)
Maximum reach	1549 mm (61 in)
Ground Clearance	152 mm (6 in)
Length rear bumper to face	7849 mm (25 ft 9 in)

Transport Dimensions

Frame width (over rub rails)	3213 mm (10 ft 6-1/2 in)
Overall length	10744 mm (35 ft 3 in)
Height	660 mm (26 in) over crawler frame
Weight (total)	45.4 tonnes (100000 lbs)

Cutting Unit

Cutting drum diameter	762 mm (30 in)
Cutting drum width	3353 mm (11 ft)
Cutting power	2 x 149 kW (2 x 200 hp) motors (one hour rating)

Loading Unit

Loading method	4 finger CLA
Conveyor width	762 mm (30 in)
Conveyor depth	102 mm (4 in)
Loading capacity	8 - 10 tonnes/min (9 - 11 tons/min)
Conveyor power	2 x 37 kW (2 x 50 hp) motors (one hour rating)

Traction Unit

Crawler chain width	508 mm (20 in)
Crawler assembly length	2921mm (9 ft 7 in)
Ground pressure	150 kPa (21.7 psi)
Crawler speed	0 - 20 m/min (0 - 65 fpm)
Traction power	2 x 82 kW (2 x 110 hp) AC / VFD (one-hour rating)

Pump Unit

Pump power	1 x 37 kW (1 x 50 hp) motor (one-hour rating)
------------	--

Continuous Miner - CM210-NP

Optional Dust Suppression

Scrubber assembly	Top Mounted
Scrubber type	Wet bed
Scrubber capacity	1.9 cms (4000 cfm)
Fan power	1 x 10 kW (13 hp) motor

Electrical System

Machine voltage	950 VAC 60 Hz (International voltages available)
Control system	Processor based/ radio remote control

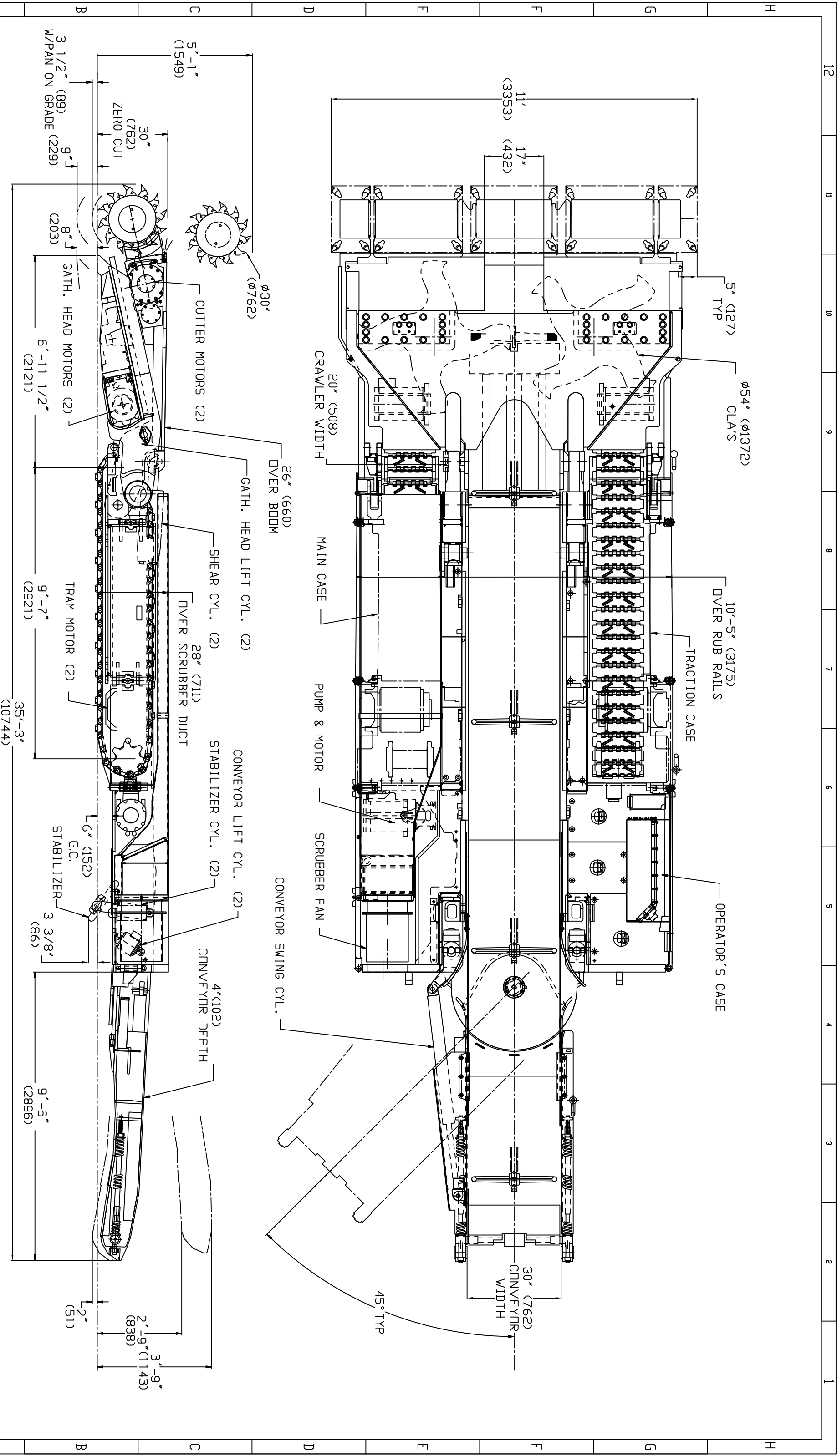
Total Installed Power	575 kW (770 hp) (one-hour rating w/o scrubber)
------------------------------	---

For more complete information on Cat Products, dealer services, and industry solutions, visit us on the web at mining.cat.com and www.cat.com

©2012 Caterpillar Inc.
All rights reserved

CAT, CATERPILLAR, their respective logos, "Caterpillar Yellow" and the "Power:Edge" trade dress, as well as corporate and product identity used herein, are trademarks of Caterpillar and may not be used without permission.





ALL DIMENSIONS ARE IN INCHES UNLESS NOTED OTHERWISE

FOR INFORMATION

THIS DOCUMENT IS THE PROPERTY OF CATERPILLAR INC. SUBJECT MATTER HEREIN IS PRIVATE CONFIDENTIAL, AND RESTRICTED IN USE. REPRODUCTION, DISTRIBUTION, OR DISSEMINATION OF THIS DOCUMENT IS PROHIBITED WITHOUT THE WRITTEN PERMISSION OF CATERPILLAR INC. FOR RESTRICTED INFORMATION, SEE SECTION 1.5 OF THE CATERPILLAR PATENT POLICY.

REV	DESCRIPTION	DATE	NAME	S/N
00	NEW RELEASE	6/13/12	JMB	-

MATERIAL	WEIGHT LBS	UNITS	SO FT/LIN FT
BUCYRUS P/N MATERIAL			
RAW DIMENSIONS			

DATE	NAME
6/13/12	JMB
6/13/12	RDK
6/13/12	BR/HELM

CAT

ATTENTION: SCALE NONE TITLE: CM210-NP, 4000 CFM SCRUBBER PROJECTION NONE

MODEL NO. CM210-NP DRAWING NUMBER 1507251 FIRST USED SIMILAR TO:

30' WIDE CONVEYOR 9'-6" OVERHANG RADDIO REMOTE, 54" CLA GH.

SHEET 1 OF 1