



# Cat® CM220

## Continuous Miner

### Specifications

#### Operating Dimensions

Mining range (recommended)	1067 - 2032 mm (42 - 80 in)
Minimum height	914 mm (36 in)
Maximum reach	2337 mm (92 in)
Ground Clearance	229 mm (9 in)
Length rear bumper to face	7975 mm (26 ft 2 in)

#### Transport Dimensions

Frame width	3277 mm (10 ft 9 in) (over rub rails)
Overall length	10871 mm (35 ft 8 in)
Height	864 mm (34 in) over scrubber duct
Weight (total)	56.7 tonnes (125000 lbs)

#### Cutting Unit

Cutting drum diameter	813 mm (32 in)
Cutting drum width	3505 mm (11 ft 6 in)
Cutting power	2 x 149 kW (2 x 200 hp) motors (one hour rating)

#### Loading Unit

Loading method	6 finger CLA
Conveyor width	914 mm (36 in)
Conveyor depth	152 mm (6 in)
Loading capacity	14 - 18 tonnes/min (15 - 20 tons/min)
Conveyor power	2 x 37 kW (2 x 50 hp) motors (one hour rating)

#### Traction Unit

Crawler chain width	508 mm (20 in)
Crawler assembly length	2896 mm (9 ft 6 in)
Ground pressure	189 kPa (27.4 psi)
Crawler speed	0 - 26 m/min (0 - 85 fpm)
Traction power	2 x 82 kW (2 x 110 hp) AC / VFD (one-hour rating)

#### Pump Unit

Pump power	1 x 37 kW (1 x 50 hp) motor (one-hour rating)
------------	--

# Continuous Miner - CM220

---

## Optional Dust Suppression

---

Scrubber assembly	Top Mounted
Scrubber type	Wet bed
Scrubber capacity	2.8 cms (6000 cfm)
Fan power	1 x 22 kW (30 hp) motor

---

## Electrical System

---

Machine voltage	950 VAC 60 Hz (International voltages available)
Control system	Processor based/ radio remote control

---

<b>Total Installed Power</b>	575 kW (770 hp) (one-hour rating w/o scrubber)
------------------------------	---

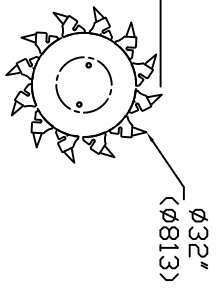
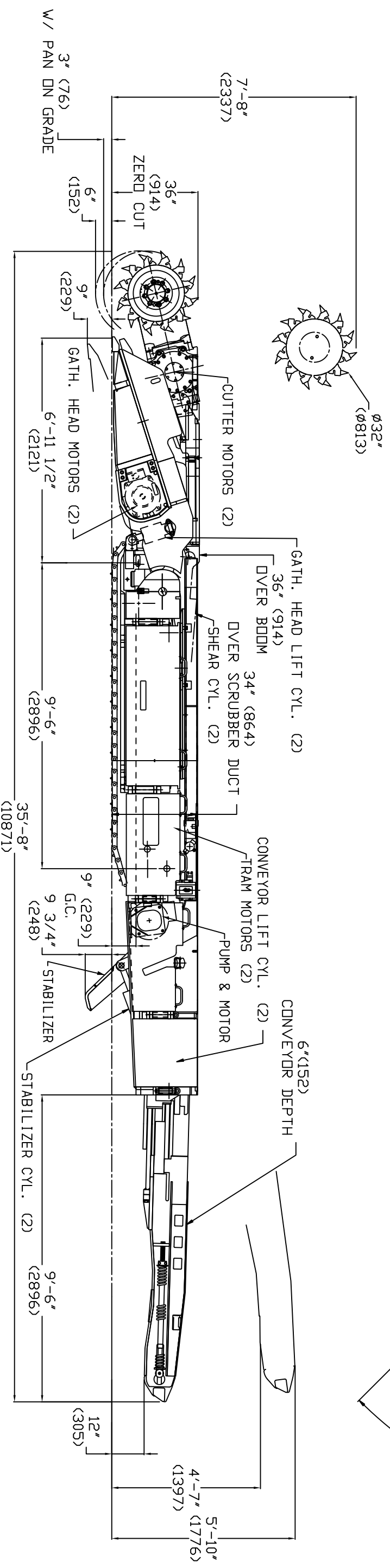
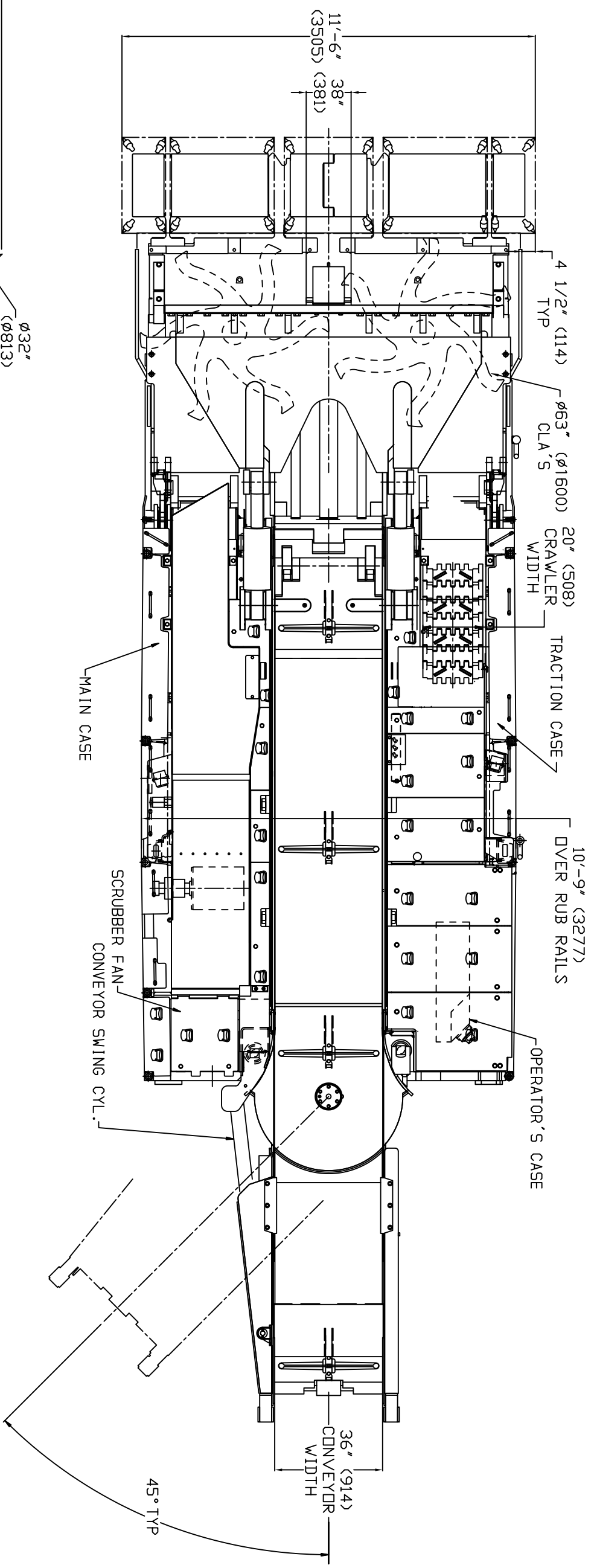
For more complete information on Cat Products, dealer services, and industry solutions, visit us on the web at [mining.cat.com](http://mining.cat.com) and [www.cat.com](http://www.cat.com)

©2012 Caterpillar Inc.  
All rights reserved

CAT, CATERPILLAR, their respective logos, "Caterpillar Yellow" and the "Power:Edge" trade dress, as well as corporate and product identity used herein, are trademarks of Caterpillar and may not be used without permission.

AEHQ0000





**FOR INFORMATION**

THIS DOCUMENT IS THE PROPERTY OF CATERPILLAR INC. SUBJECT MATTER HEREIN IS PRIVATE, CONFIDENTIAL, AND RESTRICTED. NO PART OF THIS DOCUMENT IS TO BE REPRODUCED, COPIED, DISTRIBUTED, OR TRANSMITTED IN ANY FORM OR BY ANY MEANS, ELECTRONIC OR MECHANICAL, INCLUDING PHOTOCOPYING, RECORDING, OR BY ANY INFORMATION STORAGE AND RETRIEVAL SYSTEM. ANY UNAUTHORIZED REPRODUCTION OR USE OF THIS DOCUMENT IS PROHIBITED. FOR RESTRICTIONS ON THE USE OF THIS DOCUMENT, REFER TO THE RESTRICTIONS ON THE SPECIFICATION FOR THE EQUIPMENT TO WHICH THIS DOCUMENT APPLIES.

REV	DESCRIPTION	DATE	NAME	S/N	REV	DESCRIPTION	DATE	NAME	S/N
00	NEW RELEASE	6/13/12	JMB		00	NEW RELEASE	6/13/12	JMB	

MATERIAL	WEIGHT LBS	UNITS	SO FT/LIN FT	DATE	NAME
BUCYRUS P/N				6/13/12	JMB
MATERIAL					
RAW DIMENSIONS					

DATE	NAME	MODEL	PROJECTION	SCALE	TITLE
6/13/12	JMB	CM220	NONE	36"	CM220, 6000 CFM SCRUBBER WIDE CONVEYOR 9'-6" OVERHANG (00)
6/13/12	RJDK				RADIO REMOTE, 63" CLA GH
6/13/12	BRITHELM				

DATE	NAME	MODEL	PROJECTION	SCALE	TITLE
04/08	REV 1	CM220	NONE	36"	CM220, 6000 CFM SCRUBBER WIDE CONVEYOR 9'-6" OVERHANG (00)
					RADIO REMOTE, 63" CLA GH

**CATERPILLAR**

MODEL NO. CM220  
DRAWING NUMBER 1507252  
FIRST USED  
SHEET 1 OF 1

ALL DIMENSIONS ARE IN INCHES UNLESS NOTED OTHERWISE